

AIRFLEX II

Flexion-Distraction



Forsco Labs
Exclusive Distributor - HILL Laboratories

AIRFLEX II™

THERE'S ONLY ONE AIRFLEX

In 1993, the original AIRFLEX Table revolutionized flexion-distraction. The AIRFLEX II combines all the ground-breaking innovations of its predecessor with dynamic new features that place the AIRFLEX II in a class by itself.



*Shown with
Black Upholstery
and Black Base*

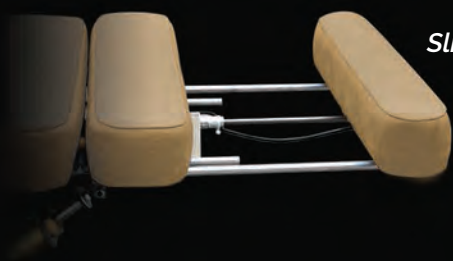
Smart Lock™
Touchscreen
unlocks/locks the
flexion cylinder

STANDARD FEATURES

- Flexion & Distraction, air-powered, manually-controlled
- High-Definition Touchscreen Controls
- Tilting Headpiece and Thoracic Release
- Removable Tiller Bar at foot-end
- Lateral Flexion with 21 Locking Positions
- Slide-out Ankle Support with Ankle Straps
- Elevation Range from 21 1/2" to 29"
(higher starting heights available)
- Electric height controlled by Foot Pedal
- Width 24", Length 5'8" (extends to 6'5")
- Foam Top - 3" Medium. (Soft or Firm optional)
- Choice of 20 Colors for the top cushions
- Beige, Gray or Black Base, enclosed for safety
- One-year warranty



*Electric adjustable
height controlled
by a foot pedal*



*Slide-Out Ankle
Support*

AIRFLEX II

OPTIONS

AIR DROPS

The AIRFLEX II can be equipped with up to four air-drops including cervical* (straight-down and forward-motion), thoracic, lumbar and pelvic (shown right). Each is activated by tapping the foot pedal or optional dual footstrips, shown left.



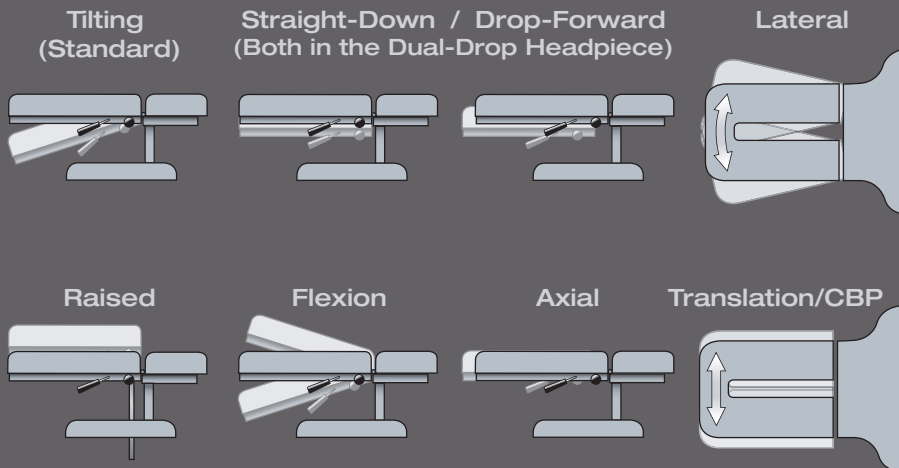
* The Cervical Headpiece can be ordered with a manual drop.

AIR THORACIC BREAKAWAY

The Air-Thoracic Breakaway (with release) allows for a thoracic recoil movement and features adjustable air-spring tension controlled by a pressure pedal. It locks at any point down to 4.25" and can be combined with thoracic and lumbar drops.

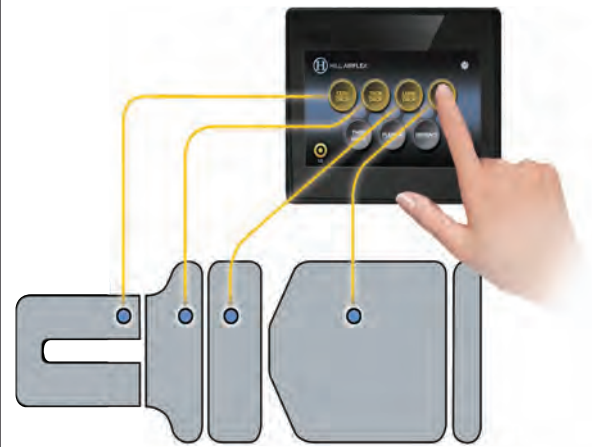
HEADPIECES

Add functionality to the standard Tilting Headpiece by choosing and combining several headpiece options including Dual-Drop, Raised, Flexion, Axial-Motion, Lateral and Translation (CBP).

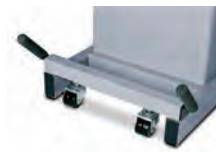


MANUAL CERVICAL FLEXION

The Flex-Headpiece (right) comes with the raised headpiece, occipital strap and removable tiller bar. When using cervical flexion, the headpiece unlocks and a gas-spring gently compresses and recoils as you control the flexion, lateral and long-axis movement.

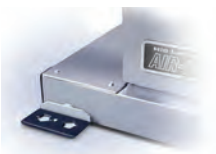


Thoracic/Abdominal Breakaway



CASTERS

Mount on each end of the Air-Flex to provide easy movement of the table



ROCKER FOOT PEDAL

Mount on both sides of the table. Substituted for or add to, the corder height pedal.



FINESSE UPHOLSTERY

Upgrade to Finesse with foam backing for added comfort and smoother, stronger finish.

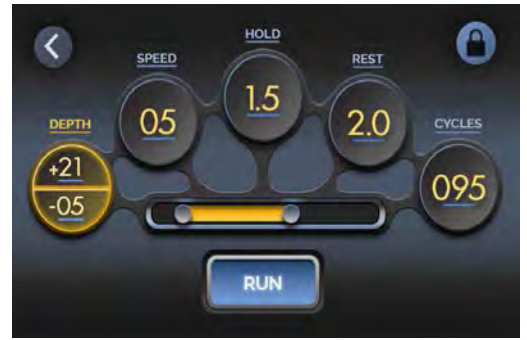


Cervical Flexion

AUTO-FLEX

NOW WITH AUTOMATIC FLEXION AND EXTENSION

Easily switch from manual flexion to Auto-Flex for controlled, air-powered flexion and/or extension cycles. Using the touchscreen, set the depth (negative for flexion and positive for extension), speed, hold-time, rest-time and number of cycles. You also have complete control to lock at any angle, pause or stop the treatment, change settings and resume—all through the touchscreen. The hand-held Patient Safety Switch is included with Auto-Flex which stops the automatic treatment at any time.



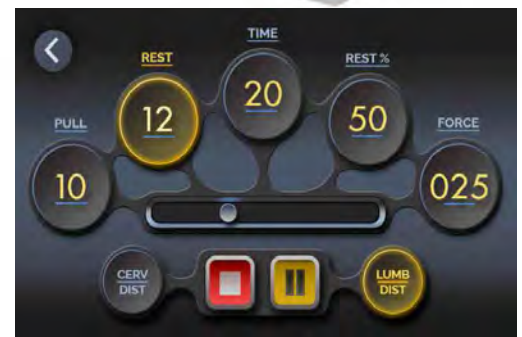
Shown in Black with Black Base

The 7» HD touchscreen (shown right) offers one-touch digital accuracy for controlled, fully repeatable treatments.

AUTO-DISTRACTION

URNS YOUR AIRFLEX II INTO ONE OF THE MOST EFFECTIVE TRACTION TABLES AVAILABLE

Auto-Distractiion adds fully programmable lumbar and cervical distraction to the AIRFLEX II. Using the touchscreen, you control the rest-cycle time, pull-cycle time, rest percentage, treatment time and force—all with one-touch ease and slider control. Cervical traction features our safe, comfortable Cervical Traction Device (below), which ensures complete encapsulation of the occiput. In lumbar distraction, the patient is secured with ankle straps and a counter traction strap around the lower back. You can also

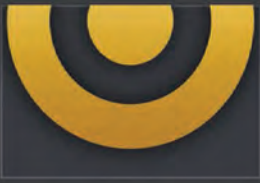


use flexion and lateral movement during distraction or lock for perfect positioning.





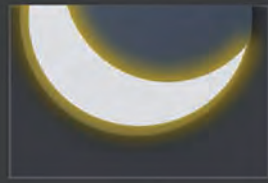
ONE-TOUCH CONTROL. POWERFUL FEATURES.



Target Touch™
Streamlines flexion balancing for easier-than-ever patient set-up.



Smart Lock™
Touchscreen lock, completely eliminates any need for manual flexion locks.



Sleep Mode
Automatically resets and replenishes all air functions between each patient.



Air-Powered Auto-Flexion
With motor-free, AI-monitoring and dynamic control of auto-flexion functions.



Self-Diagnostic
Provides automatic airflow testing and real-time status reports of all table systems.



Modular Components
AIRFLEX II base is easy to service and can be upgraded to auto-functions anytime.



High Capacity Air Supply
The AIRFLEX II has a 100% more efficient compressor (110V base) and a 100% larger air tank (for Auto Functions)



Smart Valve Manifold
AIRFLEX II valves are rated at 10 million cycles with no rewiring needed if replacement is ever necessary.



Programmable Logic Controller
In place of a static circuit board, the PLC provides dynamic control of all table

SPECIFICATIONS

STANDARD AIRFLEX II

Touchscreen, electric adjustable height, 3" foam, 24" width, tilting headpiece, thoracic release, air-distrac-tion, air-flexion, lateral motion, slide-out ankle support, ankle straps and removable tiller bar.

DELUXE AIRFLEX II

Includes all standard features plus 4 air drops - (cervical, thoracic, lumbar and pelvic), air-thoracic breakaway and dual footstrips.

Electric actuator 60 Hz,110 volts, 4.8 amps./Deluxe model -10 amps. (220-50 cycle also available).

Lifting capacity -450 lbs. • Table top length,5' 8" (extends to 6' 5") • 24" Width (optional 27"- 30").

Range of height; 21 1/2» to 29»; higher heights available • Medium density foam top; firm and soft density upon request

Choice of colors for top (see below) • Beige, gray or black telescoping base skirting made of fire-rated thermo-plastic.

Powder-coated internal and external metal parts • Shipping weight 300 lbs. • One-year warranty on part and labor

VERY AFFORDABLE

Visit Forscolabs.com to calculate options or call to speak personally with one of our representatives who will be happy to discuss payment options.

AVAILABLE COLORS

Cranberry Oxblood Shadow Birch Suede Burro Almond Crocus Spice Chestnut Chocolate Slate Hunter Teal Bluestone Blue Navy Azure Gray Charcoal Black



Finesse® Upgraded Vinyl - beautiful, smooth finish; supple with foam-backing, greater puncture-resistance. Colors below.

Bordeaux Gravel Iceberg Hershey Pine Colonial Blue Indigo Cinder Black



BASE COLORS



Standard vinyl is in durable Boltaflex® with Prefixx™, scientifically formulated to give superior protection from staining and abrasions.

Upgraded Finesse also available (see above). Shades may vary from actual material. Color choices may change without notice.

Forsco Labs

Exclusive Distributor - HILL Laboratories

149 avenue du Maine 75014 Paris, France

Tel: +33 183 597 160 - Fax:+33 972 447 924

contact@forscolabs.com • www.forscolabs.com